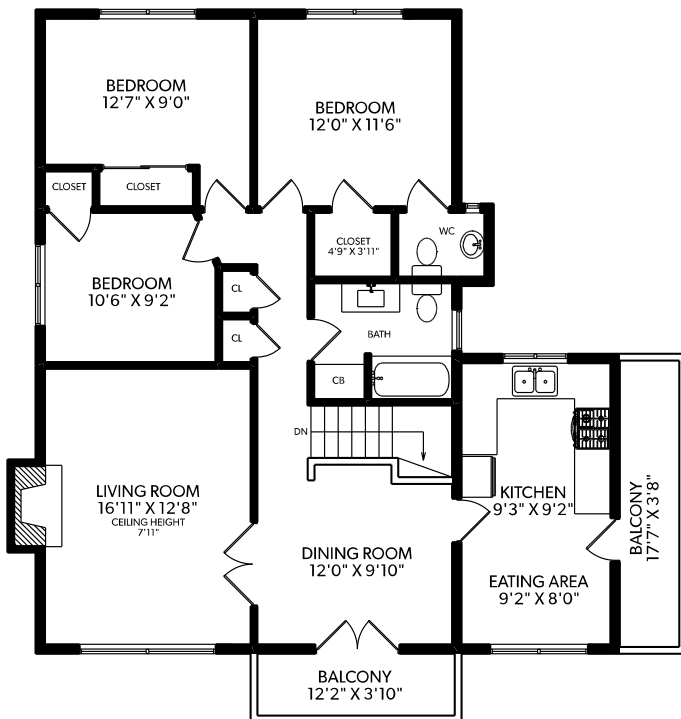


11804 Stephens Street, Maple Ridge

Main Floor: 1227 sq.ft.
Lower Floor: 1021 sq.ft.
Total: 2248 sq.ft.

Patio: 97 sq.ft.
Balconies: 130 sq.ft.
Garage: 555 sq.ft.

MAIN FLOOR



LOWER FLOOR

